



Development Survey Report: DCL/22/169*

The report displays the detailed information of a Mechanical Mining Development Survey

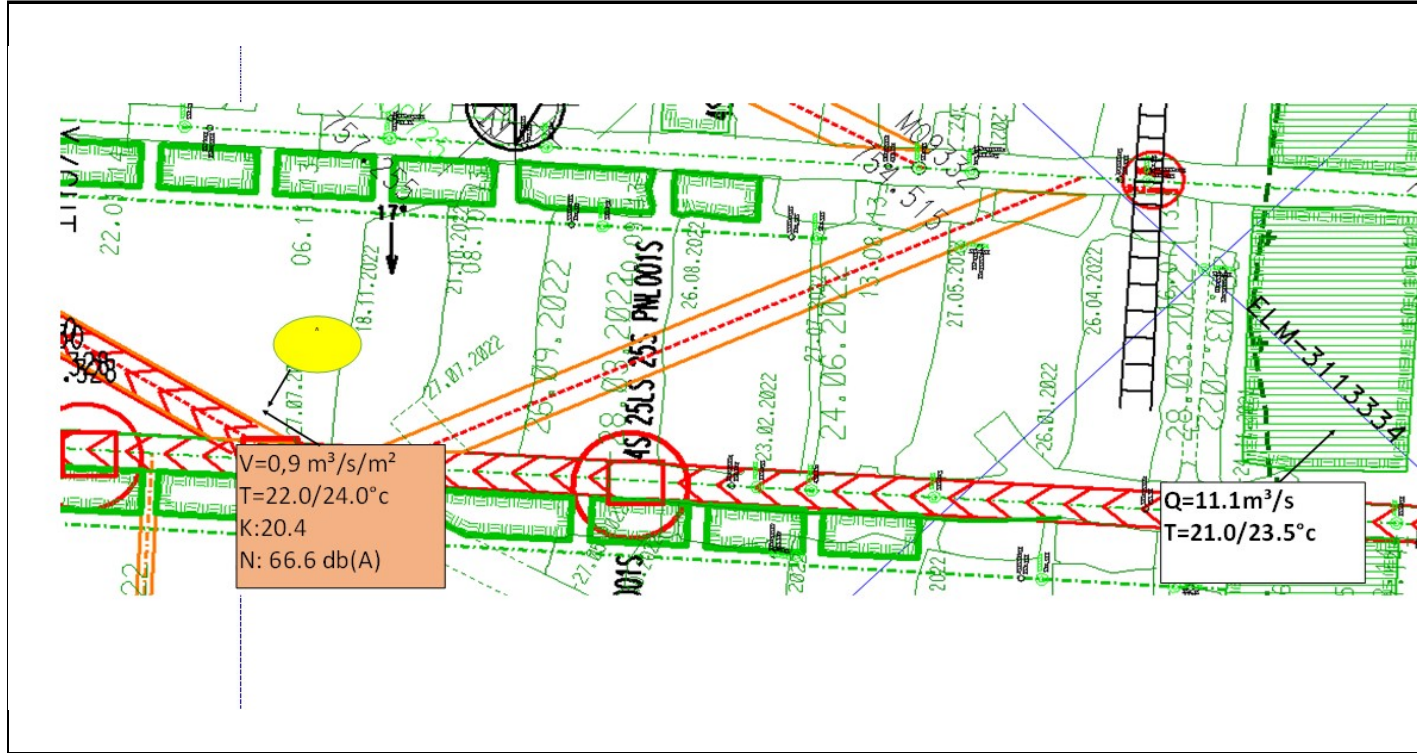
Report Date Tuesday, 12 April 2022	Mining Method Mechanised	Mine Shaft Section Spud Shaft	Half Level
Production Manager A - Raseasala	Mine Overseer B.S - Siwela	Section Manager A - Veglia	Shift Supervisor Isaac - Moshime
Quality:	11,1	Intake Temp WB:	23,5
No:	5	Intake Temp DB:	27
Distance:	590	Return Temp WB:	30,5
Equipment APS:	True	Return Temp DB:	34

Workplace: 65 RSE

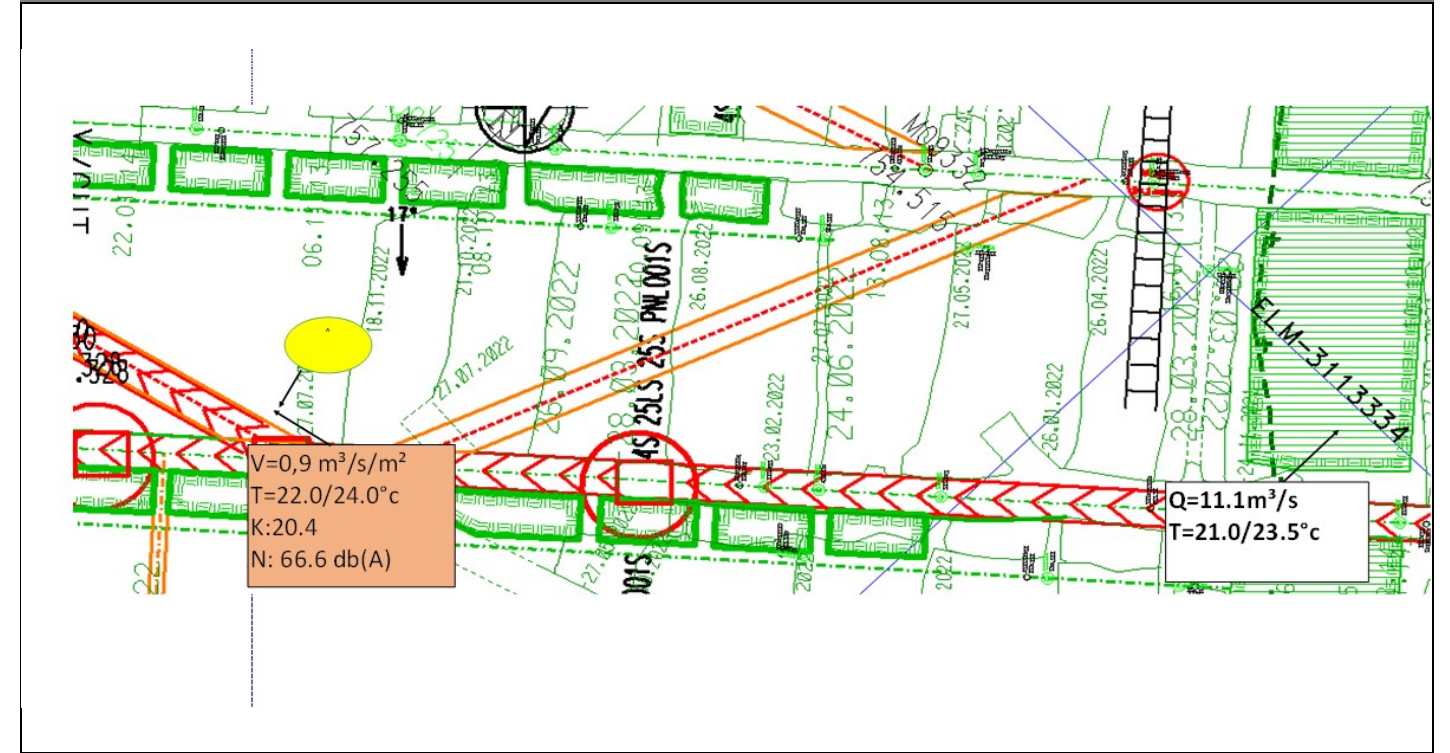
Type of Work	Face Area	Q/F/A	Kata	Quantity m3/s		Face Temp		Intake Temp		Del Temp		Leakage	Hearing Protection		
at Face	m3	m3/s/m2	>8 Mcal/cm3/s	Int	Del	WB<32,5 °C	DB<37,0 °C	WB<32,5 °C	DB<32,5 °C	WB<32,5 °C	DB<37,0 °C	<20%	Face <85dB	H.P.D's in Use	Area Demarc?
Start-Up	11,6	0,9	20,4	5,6	3,3	25,4	28,5	23,5	27	24,5	26,3	N/A	90	5	True

Fan Screens Available		Fan Silenced	Fan Recirculat	Column Length	Force Column	CH4	CO	Gas Detection Instrument		Fire Risk	Vent Instrument Available	Drinking Water
Int	Del	Y/N	Y/N	M	< 15m	%	ppm	Available	Instrument No.	Hazards	Whirling Hydrometer / Puff	Available
True	True	True	True	0	0	0	0	True	10	False	True	True

Workplace Sketch



Escape Route Sketch



Negative Deviations					
Deviation Description	Instructions	Risk Rating	Status	Comp Date	Completed By
Refuge bay not fully equipped	Equip 25ILS Refuge bay to mine standards.	C - Low	Completed	19 April 2023	
	Report any ventilation sub-standards to the ventilation department	B - Medium	Overdue		
	Ensure that the 25LS ASD does not advance more than 10m from the panel. If the ASD advances more than 10m from the panel mechanical ventilation will need to be installed. (A)	A - High	Overdue		

Signatures						
Ventilation Officer	Section Vent Officer	Shaft Vent Engineer	Shift Supervisor	Mine Overseer	Section Manager	Production Manager